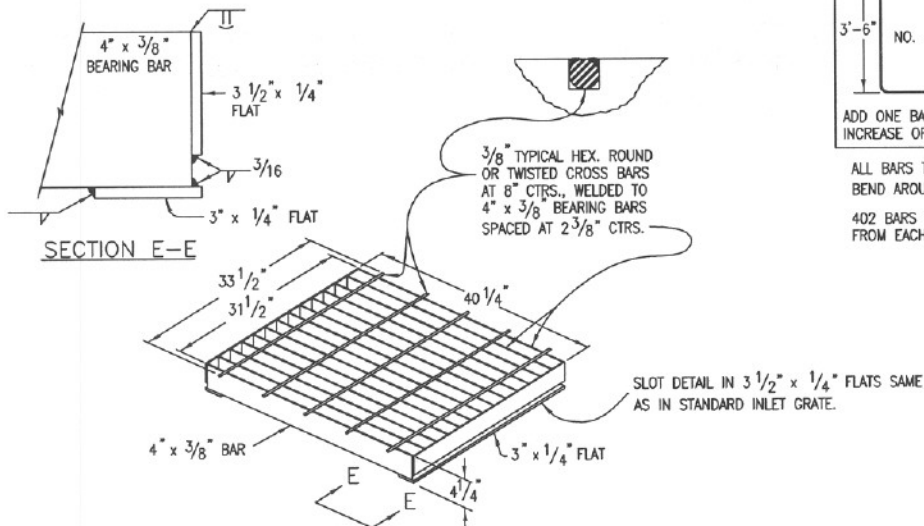


GRATE INSTALLATION
DETAIL

GENERAL NOTES

1. CONCRETE SHALL BE CLASS B. INLET MAY BE CAST-IN-PLACE OR PRECAST.
 2. REINFORCING BARS SHALL BE EPOXY COATED AND DEFORMED, AND SHALL HAVE A MINIMUM 2 IN. CLEARANCE.
 3. CONCRETE SLOPE AND DITCH PAVING SHALL CONFORM TO SECTION 507. REINFORCEMENT FOR CONCRETE SLOPE PAVING SHALL BE 6 X 6 - W1.4 X W1.4 OR 6 X 6 - W2.1 X W2.1.
 4. STRUCTURAL STEEL FOR GRATES AND GRATE INSTALLATION HARDWARE SHALL BE GALVANIZED AND SHALL BE IN ACCORDANCE WITH 712.06.
 5. THE STANDARD INLET GRATES SHALL BE USED ON ALL TYPE C INLETS UNLESS CLOSE MESH GRATES ARE SPECIFIED ON THE PLANS.
 6. STEPS SHALL BE PROVIDED WHEN INLET DIMENSION "H" EXCEEDS 3 FT.-6 IN. AND SHALL BE IN ACCORDANCE WITH AASHTO M 199.
 7. SEE SHEET M-604-11, INLET, TYPE D, FOR REINFORCEMENT AROUND THE PIPE OPENING.
- ▼ CONCRETE SLOPE AND DITCH PAVING WILL BE REQUIRED WHEN SHOWN ON PLANS.



CLOSE MESH GRATE

HYDRAULICALLY INEFFICIENT, POOR TOLERANCE FOR DEBRIS AND ICE. USE FOR PEDESTRIAN AND BICYCLE AREAS.

QUANTITIES
FOR ONE INLET

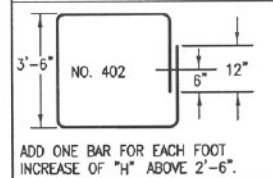
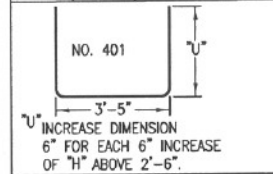
H	CONCRETE * (CU. YDS.)	REINF. STEEL (LBS.)	NO. STEPS REQ'D.
2'-6"	0.9	75	0
3'-0"	1.0	80	0
3'-6"	1.2	96	0
4'-0"	1.3	101	1
4'-6"	1.4	116	2
5'-0"	1.5	122	2
5'-6"	1.7	137	2
6'-0"	1.8	142	3
6'-6"	1.9	158	3
7'-0"	2.0	163	3
7'-6"	2.2	179	4
8'-0"	2.3	184	4
8'-6"	2.4	199	4
9'-0"	2.5	205	5
9'-6"	2.7	220	5
10'-0"	3.0	235	6
11'-6"	3.4	251	6

* INCLUDES VOLUME OCCUPIED BY PIPES.

BAR LIST FOR H=2'-6"

AND BENDING DIAGRAM

MARK	NO. REQ'D.	HGT.	LENGTH
401	2	2'-3"	7'-11"
401	6	2'-7"	8'-7"
402	3	U"	15'-0"



ALL BARS TO BE 1/2" DIA. CUT OR BEND AROUND PIPES AS REQUIRED.
402 BARS WILL BE EQUALLY SPACED FROM EACH OTHER.

Drawn By: SBW *[Signature]*
 Checked By: *[Signature]*
 Approved By: *[Signature]*

INLET
TYPE C

Issued: 5/10/05

Revised: 8/31/06

Drawing Number:
SP. 14b