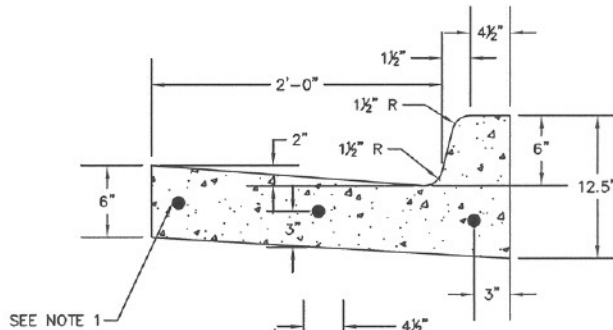
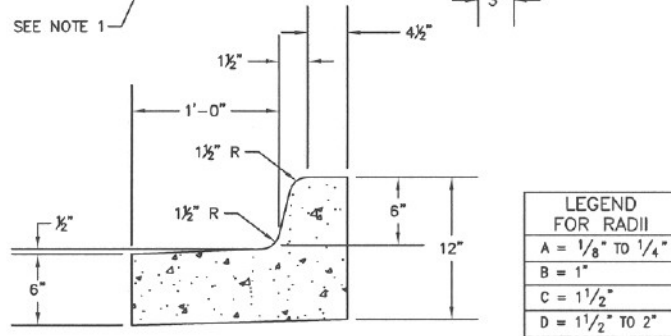


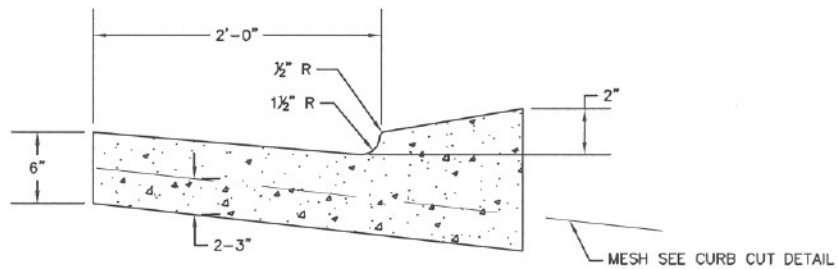
VERTICAL CURB & GUTTER



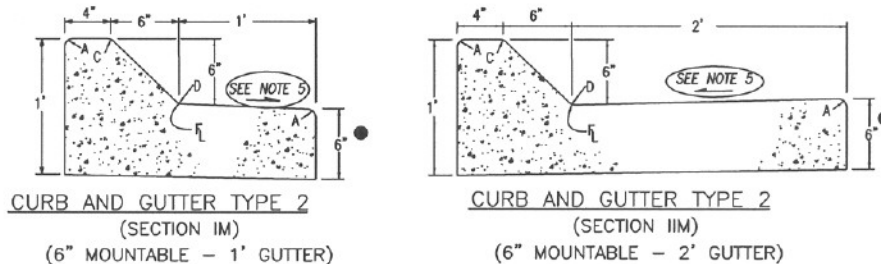
MEDIAN CURB & GUTTER



TYPICAL CURB & GUTTER AT DRIVEWAY



TYPICAL HIGH SPEED TYPE 2 (FROM CDOT M&S STANDARDS)



NOTES:

1. NO. 4 REBAR SHALL BE USED IN ALL CURB RETURNS WITH 25' OR LARGER RADII. THE REBAR SHALL BE USED FROM BEGINNING TO END OF THE CURB RETURN.
2. AT THE LOW POINT(S) OF EACH MEDIAN A DRAIN SYSTEM SHALL BE DESIGNED TO CONVEY STORM AND IRRIGATION FLOWS.
3. NATIVE SUBGRADE UNDER CURB AND GUTTER TO BE COMPACTED TO THE SPECIFICATIONS IN CHAPTER 8 OF THESE STANDARDS.
4. CHANGES TO THE HIGH SPEED TYPE 2 CURB AND GUTTER DETAIL IN THE CDOT M&S STANDARDS SHALL OVERRULE THIS DETAIL.
5. GUTTER CROSS SLOPE SHALL BE 1/2" PER FOOT WHEN DRAINING AWAY FROM CURB AND 1" PER FOOT WHEN DRAINING TOWARD CURB.

Drawn By: SBW *SBW*

Checked By: *Ph*

Approved By: *Jed*

CURB, GUTTER AND SIDEWALK
VERTICAL CURB

Issued: 5/10/05

Revised: 8/31/06

Drawing Number:
SP. 1