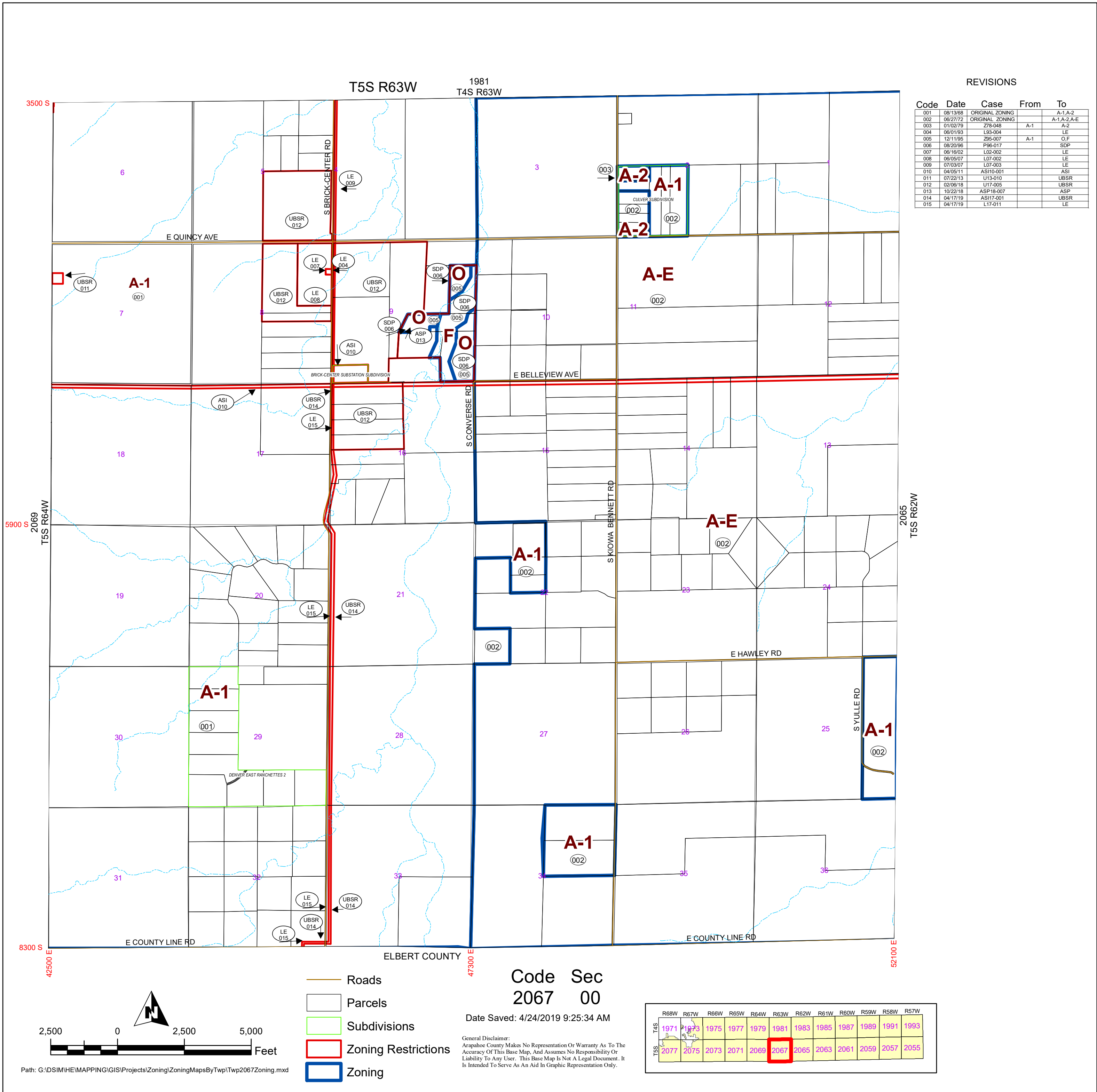


REVISIONS

Code	Date	Case	From	To
001	08/13/68	ORIGINAL ZONING		A-1,A-2
002	06/27/72	ORIGINAL ZONING		A-1,A-2,A-E
003	01/02/79	Z78-048	A-1	A-2
004	06/01/83	L93-004		LE
005	12/11/95	Z95-007	A-1	O,F
006	08/20/96	P96-017		SDP
007	06/16/02	L02-002		LE
008	06/05/07	L07-002		LE
009	07/03/07	L07-003		LE
010	04/05/11	ASH10-001		ASI
011	07/22/13	U13-010		UBSR
012	02/06/18	U17-005		UBSR
013	10/22/18	ASP18-007		ASP
014	04/17/19	ASH17-001		UBSR
015	04/17/19	L17-011		LE



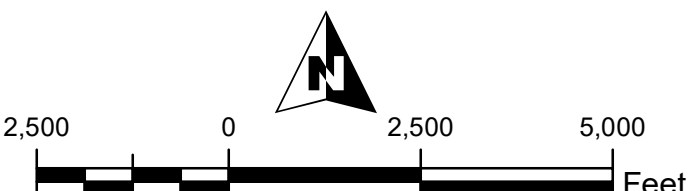
3500 S
5900 S
8300 S
42500 E

T5S R63W
1981
T4S R63W

2069
T5S R64W
2065
T5S R62W
52100 E

ELBERT COUNTY
47300 E

- Roads
- Parcels
- Subdivisions
- Zoning Restrictions
- Zoning



Path: G:\DSIMHE\MAPPING\GIS\Projects\Zoning\ZoningMapsByTwp\Twp2067Zoning.mxd